

SOUTH BUILDING

ARTIST CONCEPT by JEREMY GREGORY



My building began based on the concept of Vibration/Ripple Effect. I feel that it is the power of the community digging in and being part of the inevitable change that sends out positive vibrations. These buildings will have a ripple effect on the community, so my goal was to create a voice for this building that is unique, intriguing, and inspiring.

The gradient of colors represents hope, growth, and fresh new beginnings. From the dark purple base representing wisdom, bravery, and spirituality of the people who built this community (purple can also represent frustration and is strongly associated with royalty). Transferring up through layers/generations to a growing, bright, optimistic future! (Green is refreshing, calming, and can represent environmental awareness, inspire creativity, and even relieve stress). The green will be seen all around, and that's cool because how it affects the viewer.

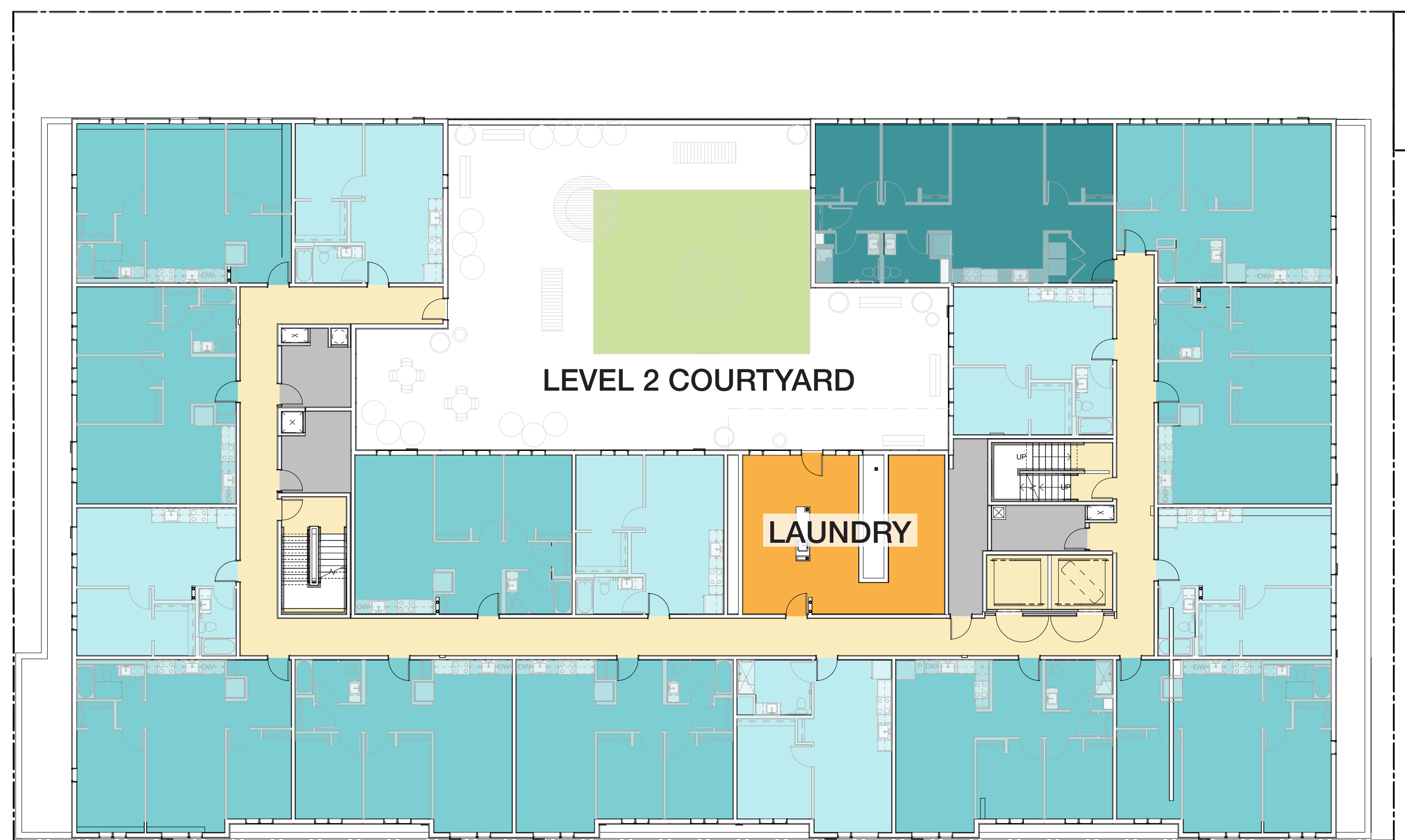
I also wanted to reference the fact that one of my main goals was to add organic shapes to the building with so many hard lines. The ripple effect was perfect for this. I chose planters, bike racks, and even trash receptacles based on the concept.



VIEW E: FROM S L STREET & S 11TH STREET LOOKING SOUTHEAST



VIEW F: FROM S L STREET LOOKING NORTHEAST



LEVEL 2 / TYPICAL FLOOR PLAN N

KEY

 1-BDRM	 OFFICES
 2-BDRM	 PARKING
 3-BDRM	 RESIDENTIAL COMMON
 CIRCULATION	 TENANT SPACE
 MEP/STORAGE	

LIVING UNIT BREAKDOWN:

94 Affordable Housing Units:

- (30) 1-bedroom units
- (54) 2-bedroom units
- (5) 3-bedroom units
- (5) 3-bedroom 2-story units
- (5) units will be accessible

COVERED PARKING:

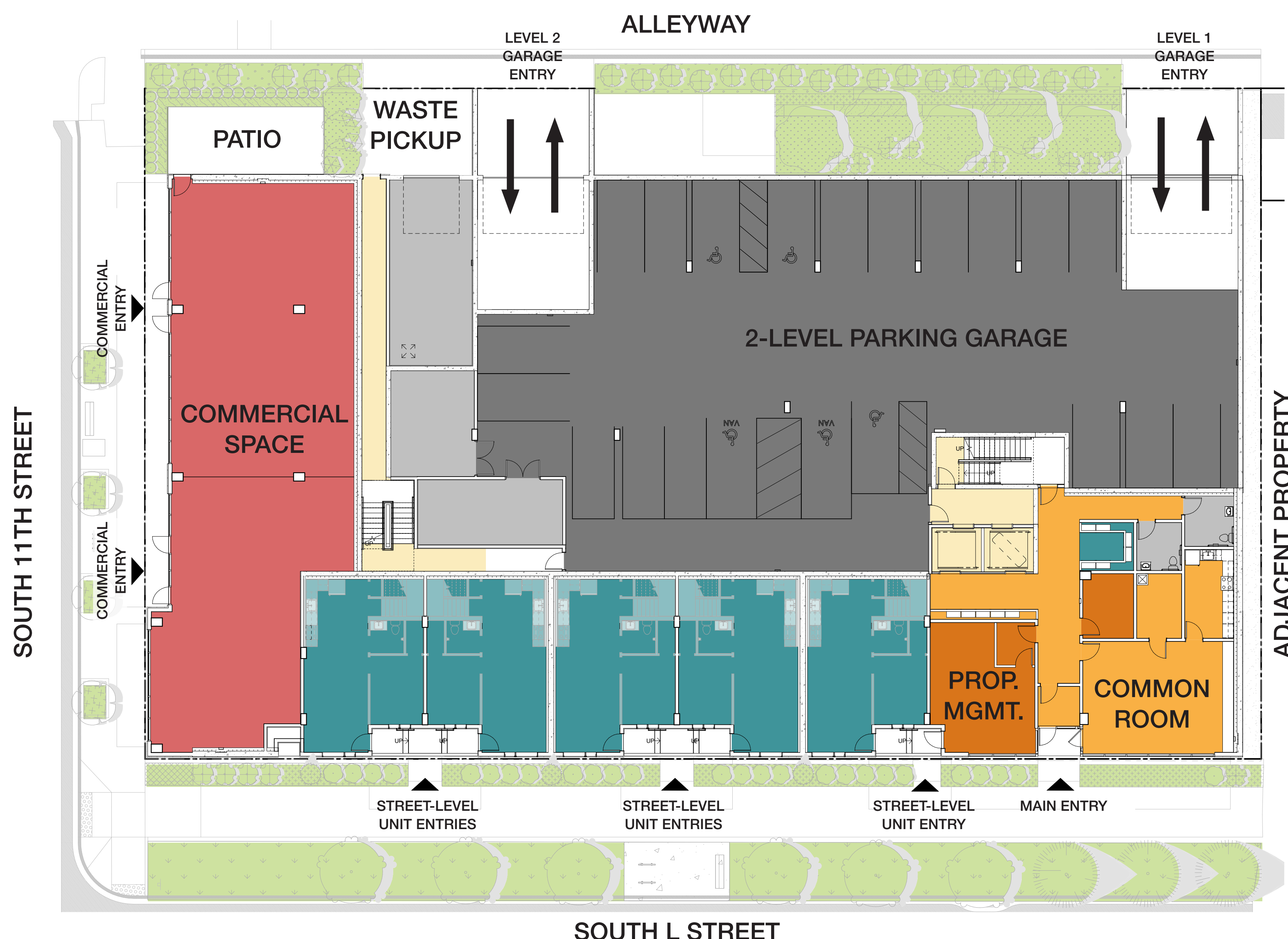
- 45 Parking Stalls:
 - (11) Accessible Stalls
 - (9) Electric-Vehicle Ready Stalls

BIKE PARKING:

75 Secure Bike Parking Stalls

RESIDENT COMMUNITY SPACES:

- East facing level 2 courtyard.
- Common room adjacent to the residential lobby.
- Common laundry room adjacent to the Level 2 courtyard.
- On-site Property Management.



STREET-LEVEL FLOOR PLAN N



Tacoma Housing Authority



WALSH CONSTRUCTION CO.



SMR ARCHITECTS