

THE CRISIS

At least 96 homeless unaccompanied youth and young adults are counted on any given night in Pierce County; over 1,000 are homeless every year.



“Hey my names & I'm looking for help asap I don't know what to do or where to turn. I have no place to stay and have no cash for a place to rent. I've tryed asking everyone I know for help and I have noone,,, I'm 19 years old and I have a lil bit of mental health with anxiety attacks, being in a social group I get very closterfobic, I have PTSD I get bad flash backs, & I also have bad health ... So it don't help that I have no help at all and I'm staying in a [t]ent outside and the weather is very bad condition and I don't have very many things no clothes or stuff to clean up and shower with. I'm very in a bad state of mind with this whole homeless thing. I hope to hear from you with maybe some sort of good news.

Thank you & god bless.”

- email to THA [November 5, 2015]

”

NEED FOR HOUSING SERVICES

- In 2017, **over 1,000** Pierce County youth and young adults were homeless without families.
- They must leave Pierce County because they do not find what they need here.
- These young people face high risks of drug abuse, sex trafficking, violence, and greatly diminished prospects for an education, an occupation and a successful adulthood.
- THA's goal is to provide homeless youth and young adults with **a second chance** at a reasonable adolescence, a second chance at a reasonable adulthood and a second chance at a life without exploitation, impoverishment and fear. Perhaps most importantly, this campus will offer them what they do not get or feel from too many other places – **a warm and safe welcome.**



Front Entry of the Arlington Campus Rental Apartments



Front Entry of the Crisis Residential Center

Arlington Drive Campus for Homeless Youth and Young Adults

OUR PARTNERS



PROJECT CONTACT Michael Mirra, Tacoma Housing Authority | (253) 207-4429 | mmirra@tacomahousing.org

Revised July 22, 2019

www.tacomahousing.net/arlington-drive-youth-campus

THE PROJECT

Tacoma Housing Authority's Arlington Campus will give homeless youth and young adults a second chance and a warm and safe welcome.



YMCA OF GREATER SEATTLE

The Y is the largest provider of housing for homeless young adults in King County, housing over 250 young people on any given night. They have 40 years of experience providing high quality support services to help young adults retain housing and/or transition into permanent housing.

Their support services encompass three departments:

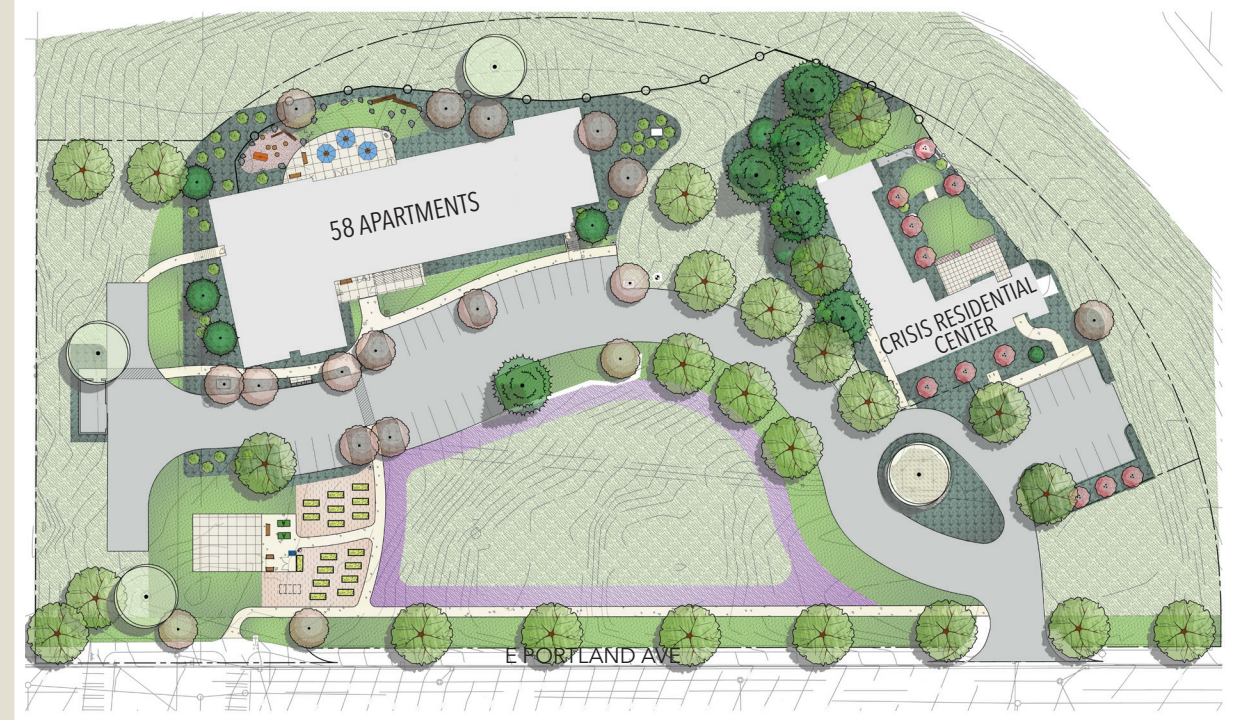
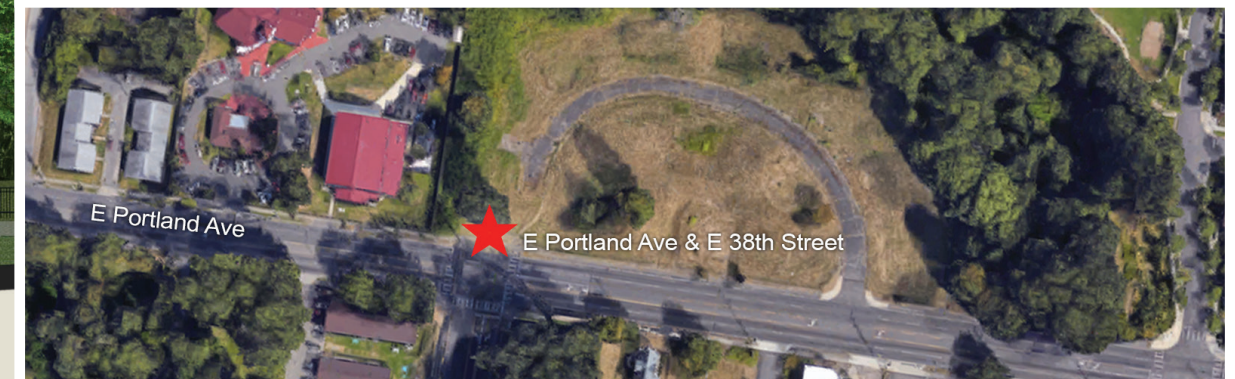
- Young Adult Housing and Services that include housing, homelessness prevention, educational, employment and technology training, civic engagement, violence prevention;
- Foster Care Services that include permanency, transition planning, and housing;
- Behavioral Health that include crisis intervention, mental health and substance abuse counseling. Young participants are often enrolled in multiple programs in order to ensure the more effective path to stability.

COMMUNITY YOUTH SERVICES

CYS's mission is to empower youth at-risk and their families to meet their goals for safety, stability, belonging and success by providing a continuum of individualized services and advocacy. CYS believes in strengthening our communities by empowering youth and families to create their own success. They envision every child growing up in a supportive home and community and achieving their full potential for personal growth.

CYS has successfully operated CRC programs since 1984 and opened New Directions as a 6 bed facility in 2016 in Pierce County to address the issue of youth homelessness as well as creating a safety net for youth in need.

Over 90% of the youth accessing New Directions are safely returned home, to a family relative, placed in a foster home or into a treatment program.



CAPITAL COST & FINANCING

- Project Cost: \$23 million
- Financing Sources
 - State of Washington
 - Tax Credit Investor Equity
 - Tacoma Housing Authority
 - City of Tacoma
 - Pierce County
 - Commercial Debt
 - Federal Home Loan Bank of Des Moines

PROJECT ELEMENTS

- 12 bed Crisis Residential Center/HOPE beds for ages 12 to 17 (will serve >400 youth a year)
- 58 apartments to rent for homeless young adults age 18 to 24; about 30% of them will be parents of babies or toddlers.
- Supportive services
- Employment and training, with social enterprises and entrepreneurial training space
- Administrative offices for Community Youth Services
- Walking distance to a middle school, Eastside Community Center, a regional health clinic, and New Salishan.
- Project will break ground and begin construction after the New Year 2019.